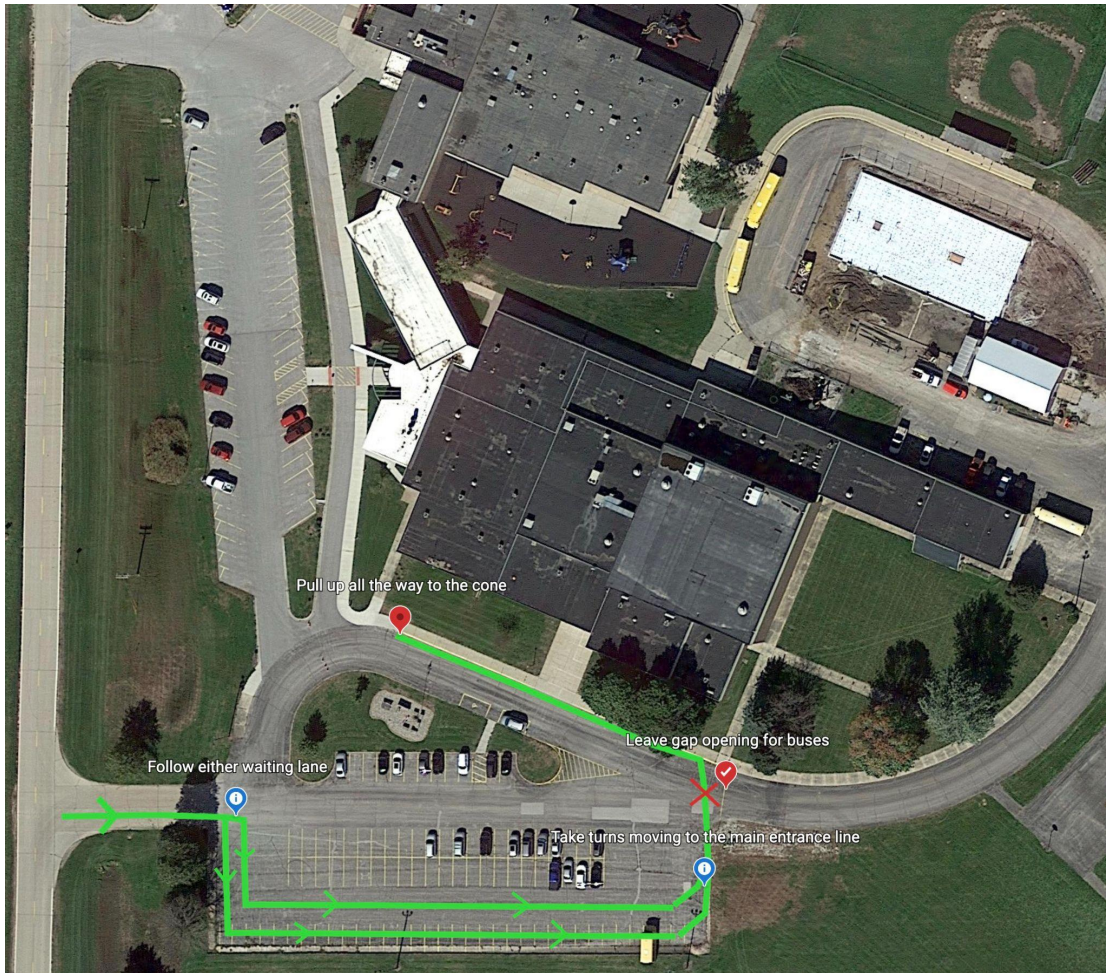


United Community After School Pick-Up Procedures

Green Route

Please refer to the map below with the green route for pick-up, as there are 3 different routes. To make the process run smoothly and keep our children safe, please adhere to the traffic direction shown below and pay attention as the traffic moves through the loop.

- The first day of pick-up and the first few weeks of school will take longer than usual as parents adjust to the pick-up procedure. Please be patient.
- Our school day ends at 3:10. If you are going to be late, please remember that you need to make different arrangements for your child's pickup or arrange to sign up for drop-in childcare or regular childcare services.



Expectations:

1. Remain in your vehicle in the loop. **Do NOT park.**
2. A staff member on duty will walk your child(ren) to your vehicle while in the lane.
3. Pull forward as much as possible to the "pick-up position" at the front of the lane.
4. Your family number card is attached to this page. **Always make sure your family's number is displayed in the front passenger side of your vehicle.**